

#11 C Major/A Minor

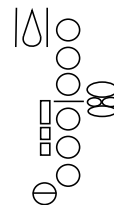
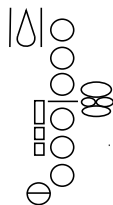
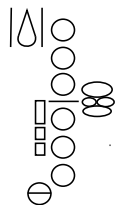
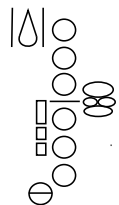
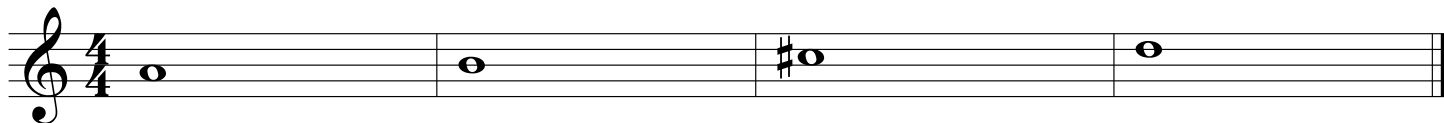
Step 1: Identify & Label each note / Step 2: Fill in the correct fingering for each note

1. _____

2. _____

3. _____

4. _____

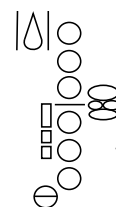
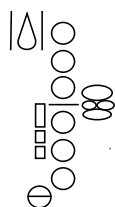
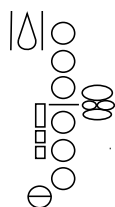
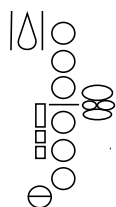
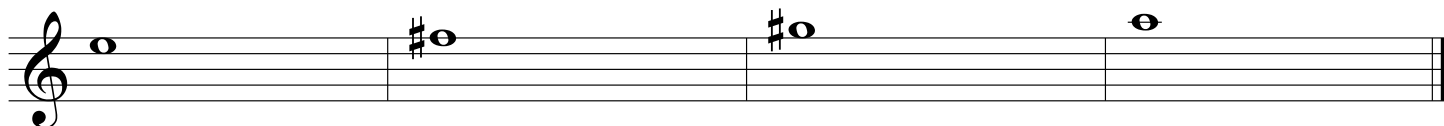


5. _____

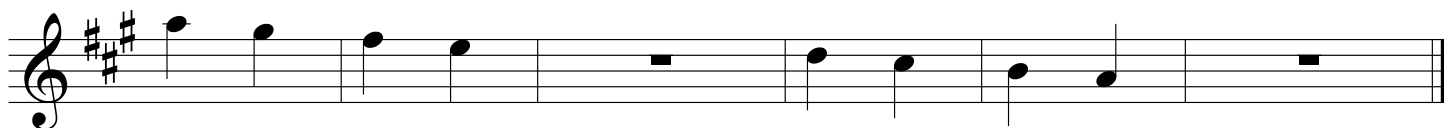
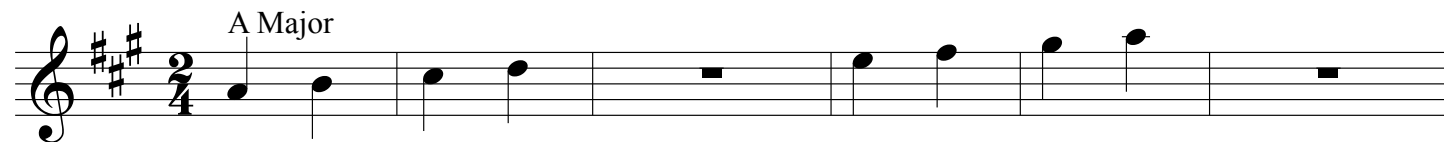
6. _____

7. _____

8. _____



C Major (concert)



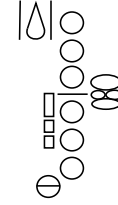
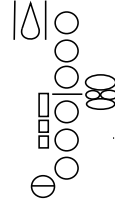
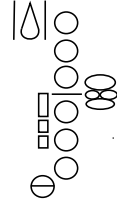
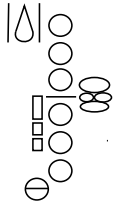
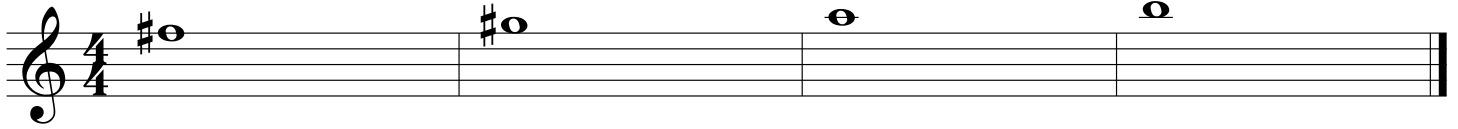
#11 C Major/A Minor - Alto/Bari Sax

9. _____

10. _____

11. _____

12. _____

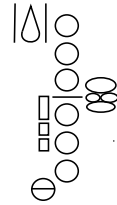
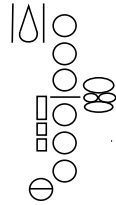
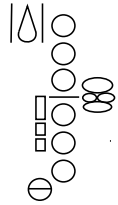
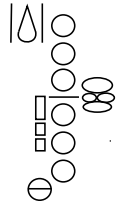
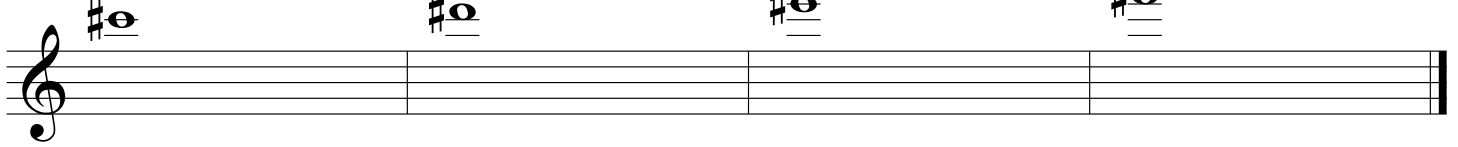


13. _____

14. _____

15. _____

16. _____

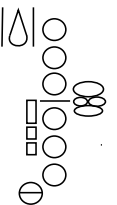
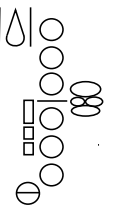
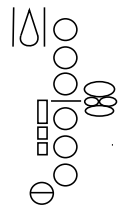
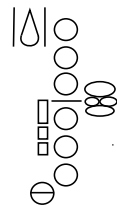
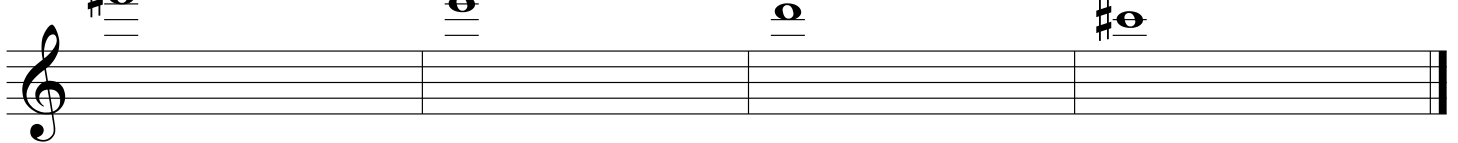


17. _____

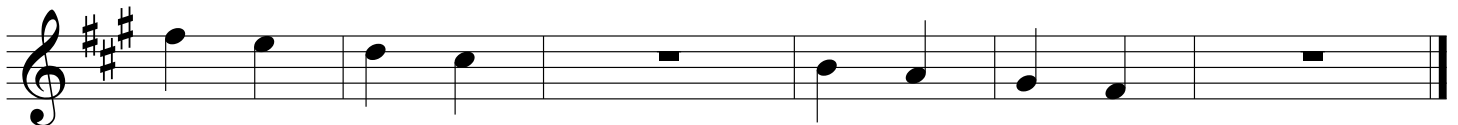
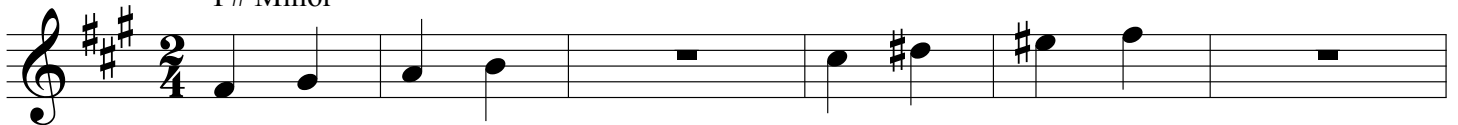
18. _____

19. _____

20. _____



A Minor (concert)
F# Minor



#12 F Major/D Minor

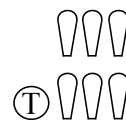
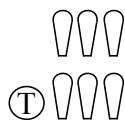
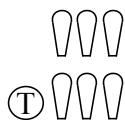
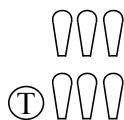
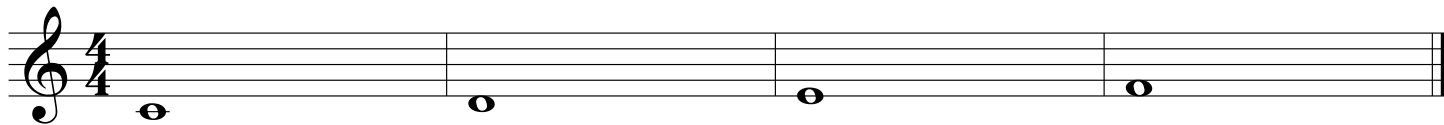
Step 1: Identify & Label each note / Step 2: Fill in the correct fingering for each note

1. _____

2. _____

3. _____

4. _____

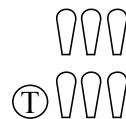
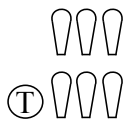
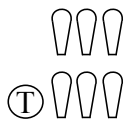
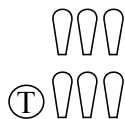
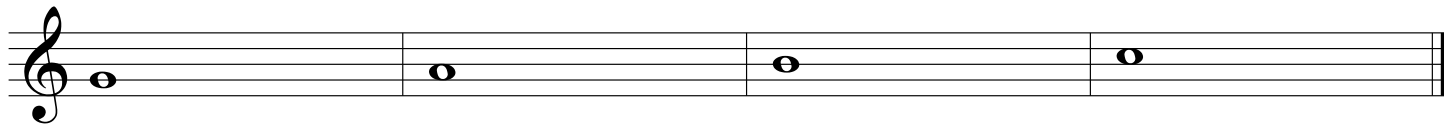


5. _____

6. _____

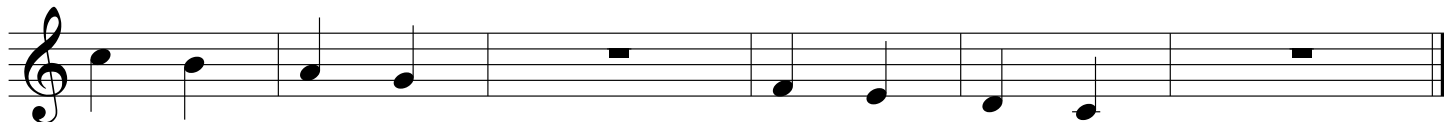
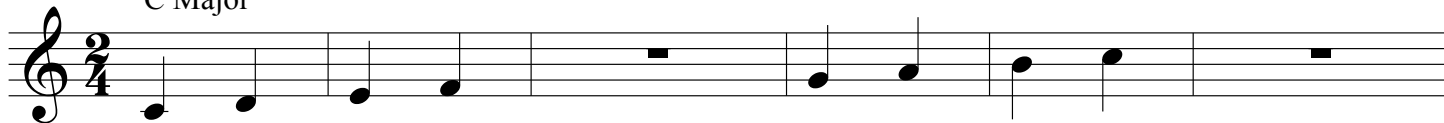
7. _____

8. _____



F Major (concert)

C Major



#12 F Major/D Minor - Horn in F

9. _____

10. _____

11. _____

12. _____

Musical staff for measures 9-12 in 4/4 time. Each measure contains a whole note. Measure 9: F4. Measure 10: F4. Measure 11: F4. Measure 12: F4. Below each note are two sets of three valve diagrams: the top set has three valves pointing down, and the bottom set has three valves pointing down with a circled 'T' to the left.

13. _____

14. _____

15. _____

16. _____

Musical staff for measures 13-16 in 4/4 time. Each measure contains a whole note. Measure 13: F4. Measure 14: F#4. Measure 15: F#4. Measure 16: F4. Below each note are two sets of three valve diagrams: the top set has three valves pointing down, and the bottom set has three valves pointing down with a circled 'T' to the left.

17. _____

18. _____

19. _____

20. _____

Musical staff for measures 17-20 in 4/4 time. Each measure contains a whole note. Measure 17: F4. Measure 18: F4. Measure 19: F4. Measure 20: F4. Below each note are two sets of three valve diagrams: the top set has three valves pointing down, and the bottom set has three valves pointing down with a circled 'T' to the left.

D Minor (concert)

A Minor

Two musical staves in 2/4 time. The top staff contains a sequence of notes: F4, G4, A4, B4, C5, B4, A4, G4, F4. The bottom staff contains a sequence of notes: F4, G4, A4, B4, C5, B4, A4, G4, F4. There are rests in the top staff at measures 3 and 7, and in the bottom staff at measures 3 and 7.

#6 B Major/G# Minor

Step 1: Identify & Label each note / Step 2: Fill in the correct fingering for each note

1. _____

2. _____

3. _____

4. _____

A musical staff in 4/4 time with a treble clef. It contains four measures, each with a single half note. The notes are B4, C#5, D5, and E5. Below each note is a fingering diagram for the oboe, showing fingerings for the left and right hands.

5. _____

6. _____

7. _____

8. _____

A musical staff in 4/4 time with a treble clef and a key signature of one sharp (F#). It contains four measures, each with a single half note. The notes are F#5, G5, A5, and B5. Below each note is a fingering diagram for the oboe, showing fingerings for the left and right hands.

A musical staff in 2/4 time with a treble clef and a key signature of two sharps (F# and C#). The title "B Major (concert)" is written above the staff. The melody consists of quarter notes: B4, C#5, D5, E5, F#5, G5, A5, B5, followed by rests.

A musical staff in 2/4 time with a treble clef and a key signature of two sharps (F# and C#). The melody continues with quarter notes: A5, G5, F#5, E5, D5, C#5, B4, followed by rests.

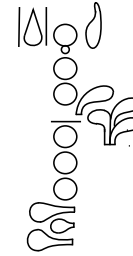
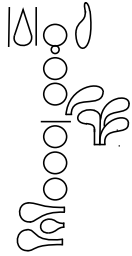
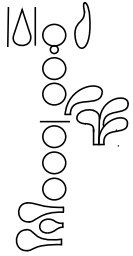
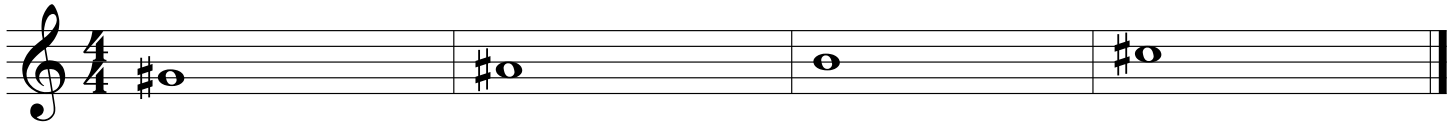
#6 B Major/G# Minor - Oboe

9. _____

10. _____

11. _____

12. _____

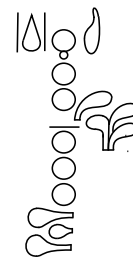
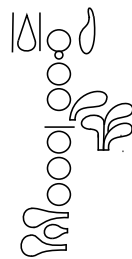
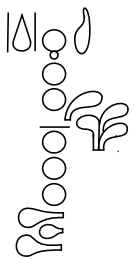
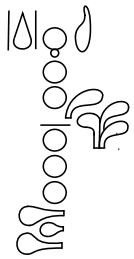
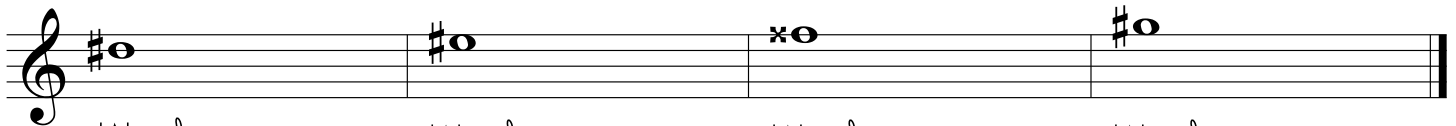


13. _____

14. _____

15. _____

16. _____

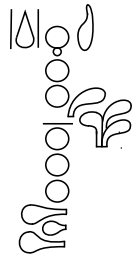
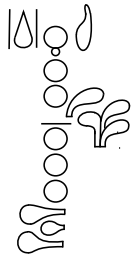
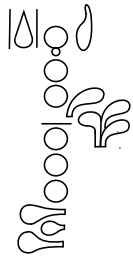
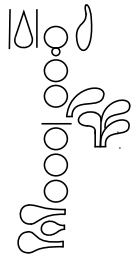
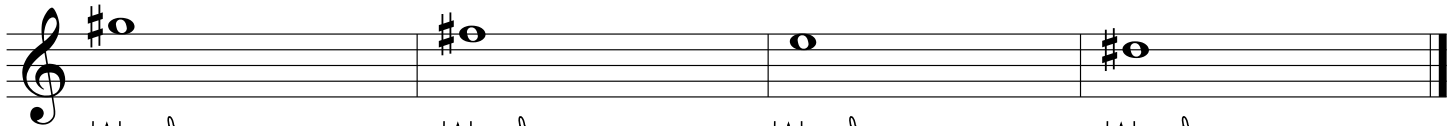


17. _____

18. _____

19. _____

20. _____



G# Minor (concert)

